

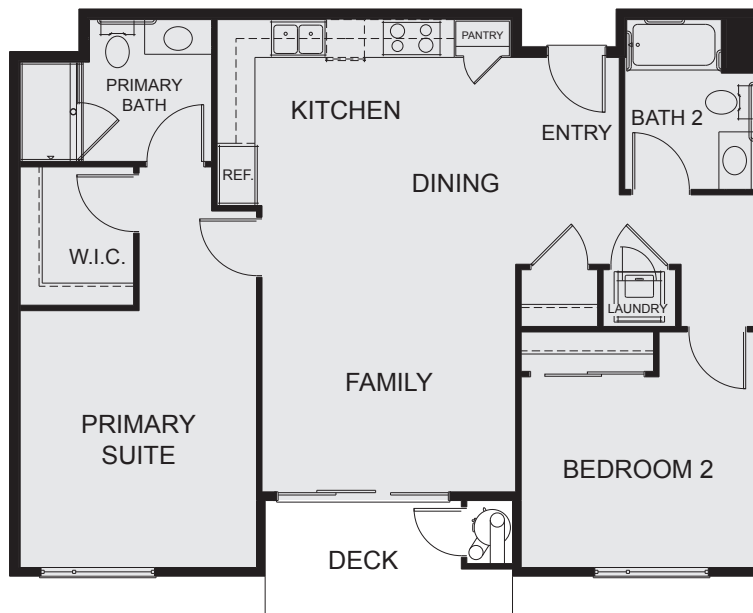
HayView Condominiums



PLAN 1

Approx. 1,125 Sq. Ft.

2 Beds | 2 Baths



SINGLE-LEVEL LIVING

29212 Mission Boulevard, Hayward, CA 94544 | HomesBuiltForAmerica.com | 800.219.0084



This is not an offer to sell but is intended for information only. Any representation as to square footage is approximate. The square footage or floor areas shown in any marketing or other materials may be more or less than the actual size and square footage of the residential unit, common area, or any other portion of the project. The developer/seller reserves the right to make modifications in materials, specifications, plans, pricing, design, scheduling and delivery without prior notice. Renderings, photography, illustrations, floor plans, amenities, finishes and other information described herein are representative only and are not intended to reflect any specific feature, amenity, unit condition or view when built. The actual condition of the project, amenity or unit, when and if completed, will control. The improvements and amenities depicted are proposed only and need not be built. There is no representation or warranty that any particular improvement or amenity will be constructed or constructed as shown. No representations and warranties are made with regard to the accuracy, completeness or suitability of the information published herein. Real Estate Consulting, Sales and Marketing by Polaris Pacific - a licensed California, Arizona, Colorado, Hawaii, Oregon and Washington Broker - CA DRE #01499250.

